

# Castles



ASKING PRICE

**£540,000**

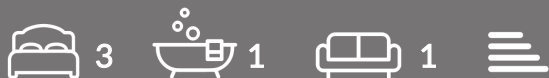
**Lavender Gardens**

Enfield, EN2 0TP    Freehold



## PROPERTY SUMMARY

A 3 bedroom semi-detached older style family house located in a quiet cul-de-sac off Lavender Hill within close proximity to Gordon Hill Train Station (serving Moorgate) and close to local schools and shops. The property requires some modernising/updating but offers fantastic potential for the incoming buyer. The property is also offered for sale on a chain free basis and viewing is recommended.

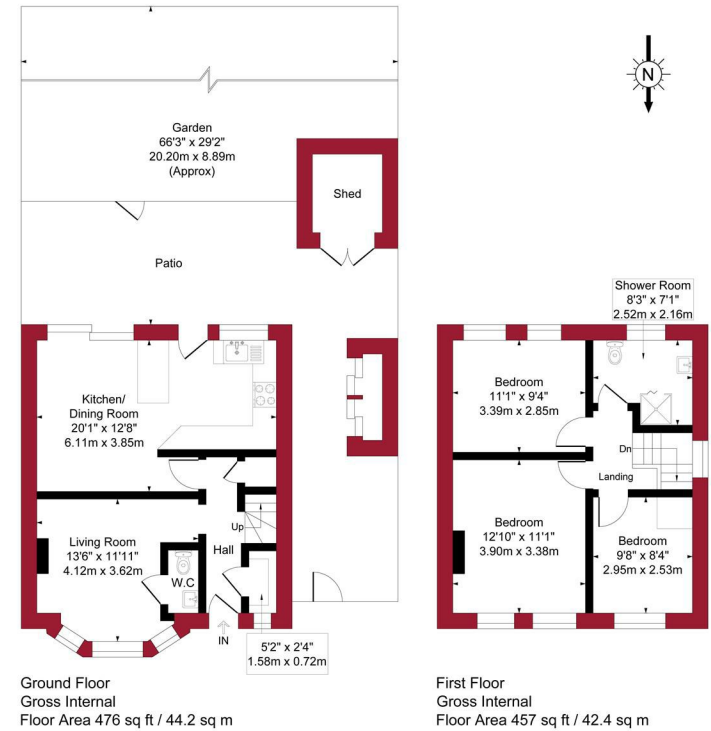








Lavender Gardens, Enfield, EN2      Approximate Gross Internal Area = 933 sq ft / 86.6 sq m



For a guide to the area  
please scan this code for  
more information



House  
Freehold  
**Council:** Enfield  
**Council Tax Band:** D

Agents Note: Whilst every care has been taken to prepare these particulars, they are for guidance purposes only. All measurements are approximate and are for general guidance purposes only and whilst every care has been taken to ensure their accuracy, they should not be relied upon and potential buyers/tenants are advised to recheck the measurements



**OFFICE ADDRESS**  
243 - 245 Hertford Road  
Enfield  
London  
EN3 5JJ

**OFFICE DETAILS**  
0208 804 8000  
enfield@castles.london  
<https://www.castles.london>

